

NOTES

ELASTOMER IN ALL BEARINGS SHALL BE 50 DUROMETER HARDNESS IN ACCORDANCE WITH THE STANDARD SPECIFICATIONS.

AT ALL SUPPORTS, NUTS FOR ANCHOR BOLTS ARE TO BE TIGHTENED FINGER TIGHT AND THEN BACKED OFF 1/2 TURN. THE THREAD OF THE NUT AND BOLT SHALL THEN BE BURRED WITH A SHARP POINTED TOOL.

SOLE PLATES, ANCHOR BOLTS, NUTS AND WASHERS SHALL BE GALVANIZED IN ACCORDANCE WITH THE STANDARD SPECIFICATIONS.

ALL BEARING PLATES SHALL BE AASHTO M270 GRADE 36.

ANCHOR BOLTS SHALL MEET THE REQUIREMENTS OF ASTM A449. NUTS SHALL MEET THE REQUIREMENTS OF AASHTO M291-DH OR AASHTO M292-2H. WASHERS SHALL MEET THE REQUIREMENTS OF AASHTO M293. SHOP DRAWINGS ARE NOT REQUIRED FOR ANCHOR BOLTS, NUTS, AND WASHERS. SHOP INSPECTION IS REQUIRED.

AT THE APPROVAL OF THE ENGINEER, SOLE PLATES AT THE EXPANSION END MAY BE FIELD WELDED.

WHEN FIELD WELDING THE SOLE PLATE TO THE GIRDER FLANGE, USE TEMPERATURE INDICATING WAX PENS, OR OTHER SUITABLE MEANS, TO ENSURE THAT THE TEMPERATURE OF THE SOLE PLATE DOES NOT EXCEED 300° F. TEMPERATURES ABOVE THIS MAY DAMAGE THE ELASTOMER.

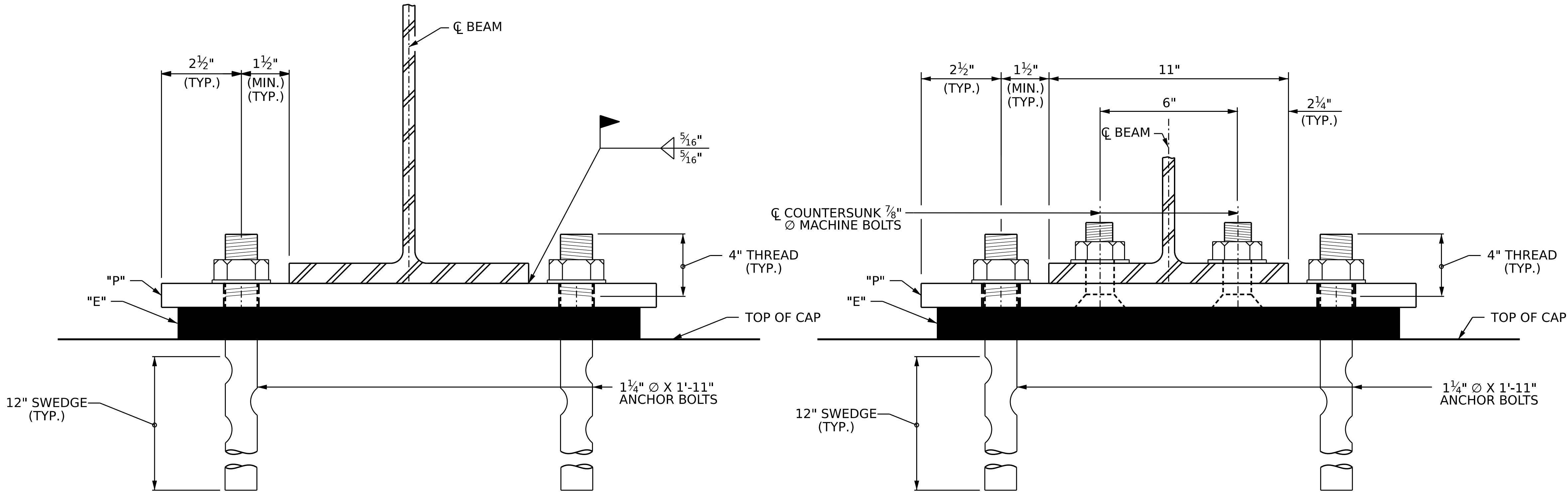
ALL SURFACES OF BEARING PLATES SHALL BE SMOOTH AND STRAIGHT.

AT NO ADDITIONAL COST TO THE DEPARTMENT, THE CONTRACTOR MAY USE ADHESIVELY ANCHORED ANCHOR BOLTS IN PLACE OF CAST-IN-PLACE ANCHORS. LEVEL 1 FIELD TESTING IS REQUIRED, AND THE YIELD LOAD OF THE ANCHOR BOLT IS 30 KIPS. FOR ADHESIVELY ANCHORED ANCHOR BOLTS OR DOWELS, SEE STANDARD SPECIFICATIONS.

ADHESIVELY ANCHORED ANCHOR BOLTS SHALL BE THREADED FULL LENGTH.

AT THE APPROVAL OF THE ENGINEER, THE OPTIONAL BOLTED SOLE PLATE MAY BE USED AT NO ADDITIONAL COST TO THE DEPARTMENT.

EXISTING ANCHOR BOLTS, ON INTERIOR BENTS, SHALL BE CUT FLUSH WITH TOP OF CAP.

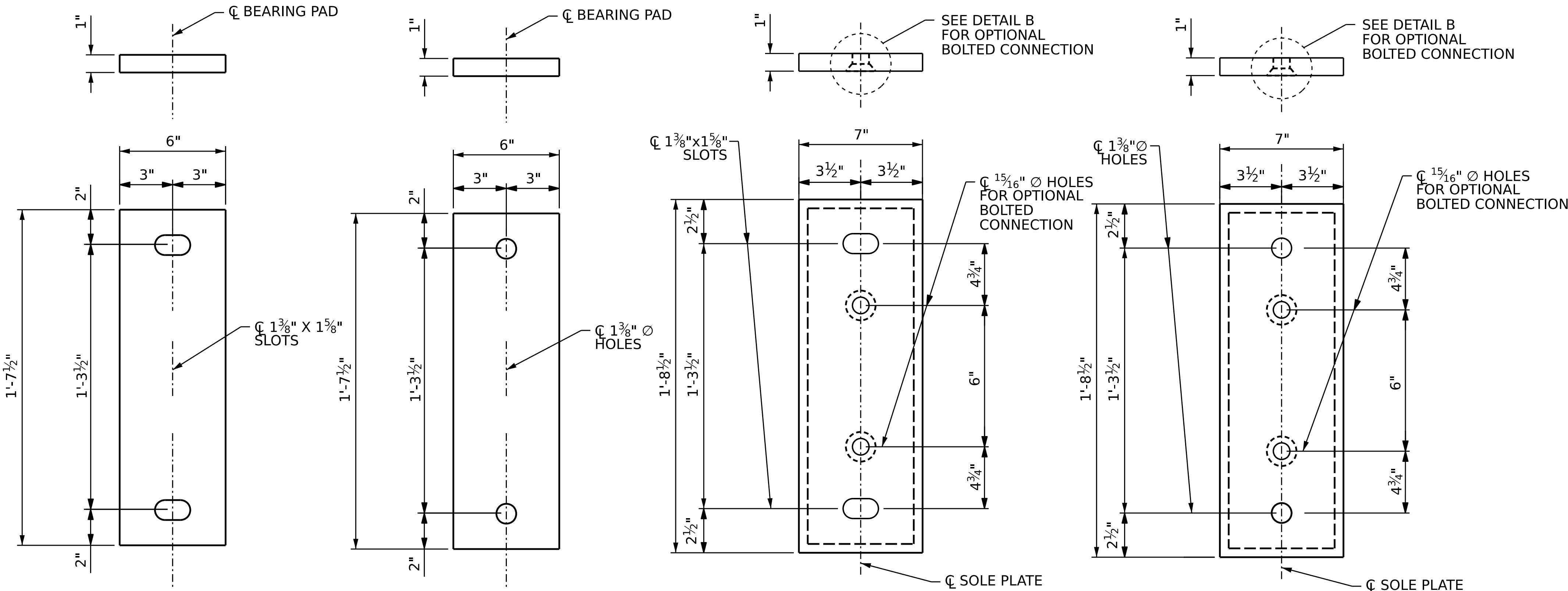


END VIEW

WELDED

END VIEW

OPTIONAL BOLTED



E1 ELASTOMERIC BEARING DETAILS

(18 REQ'D)  
EXPANSION

E2 ELASTOMERIC BEARING DETAILS

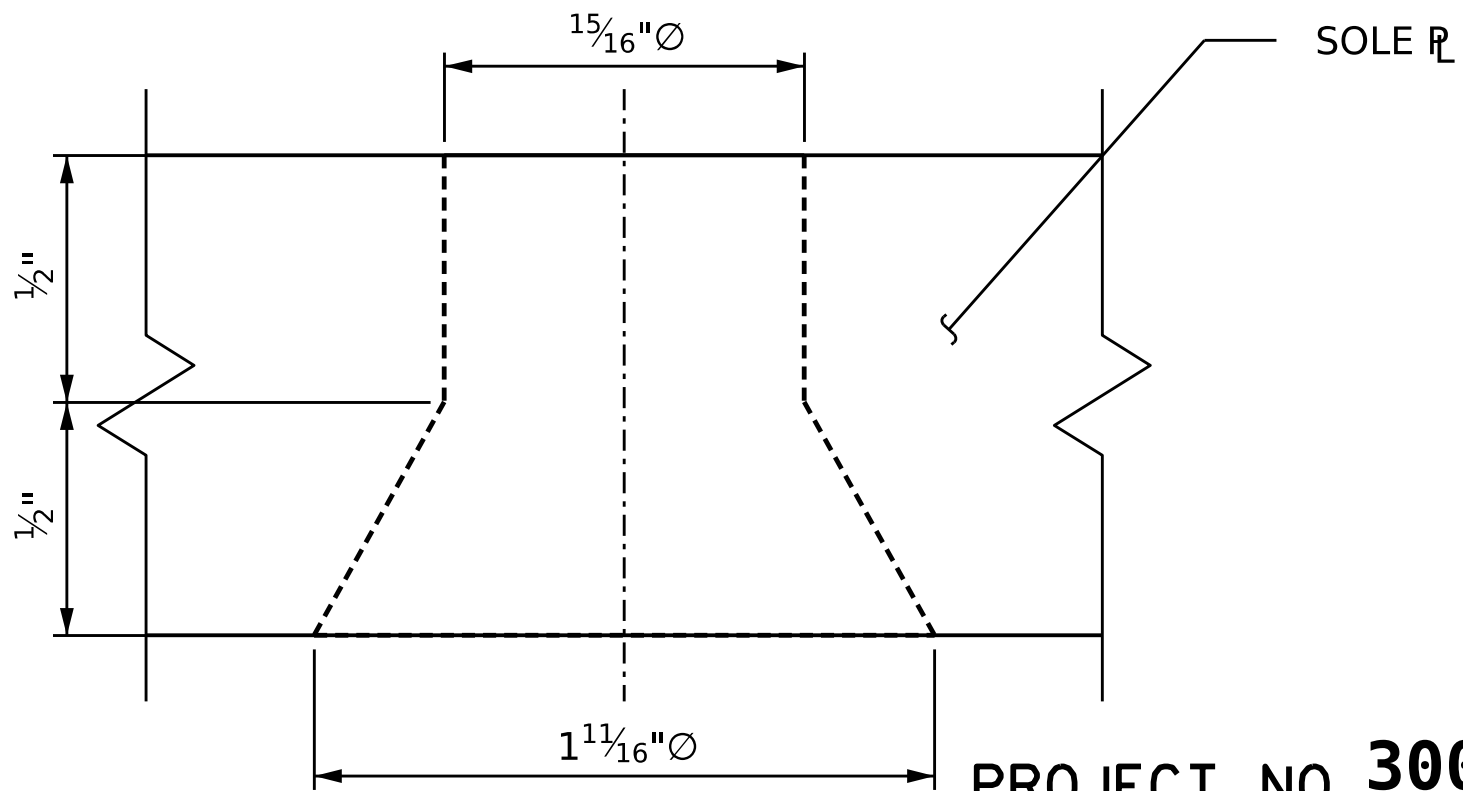
(18 REQ'D)  
FIXED

P1 SOLE PLATE DETAILS

(18 REQ'D)  
EXPANSION

P2 SOLE PLATE DETAILS

(18 REQ'D)  
FIXED

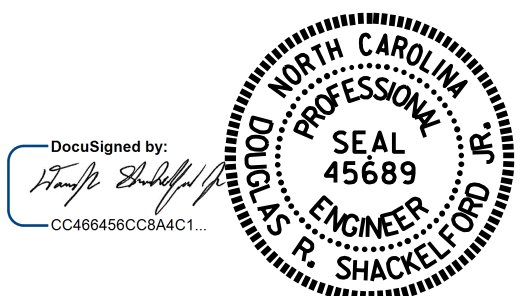


DETAIL B

PROJECT NO. **30001.WIUM.002**

**WAKE** COUNTY

STATION: **12+87.00 -L1-**



11/19/2025

ASSEMBLED BY:	P. BRYANT	DATE :	08/2025
CHECKED BY :	D. SHACKELFORD	DATE :	08/2025
DRAWN BY :	GA	10/2024	
CHECKED BY :	JDH	11/2024	

\*\*\*\*\*SYTIME\*\*\*\*\*  
\*\*\*\*\*DGN\*\*\*\*\*  
\*\*\*\*\*USERNAME\*\*\*\*\*

DOCUMENT NOT CONSIDERED  
FINAL UNLESS ALL  
SIGNATURES COMPLETED

REVISIONS						SHEET NO.
NO.	BY:	DATE:	NO.	BY:	DATE:	
1			3			S-13
2			4			TOTAL SHEETS 17